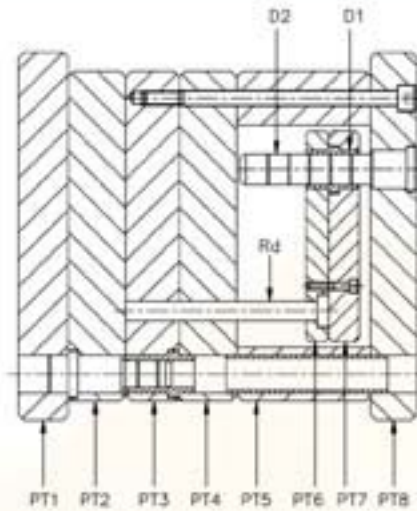
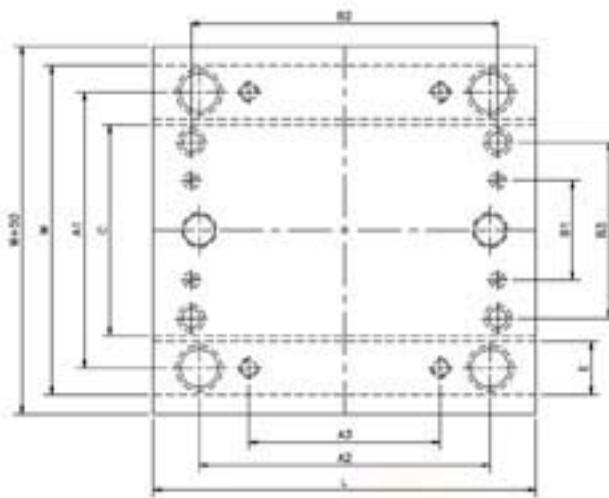




## STANDARD MOULD BASES FOR PLASTIC INJECTION MOULDS ( LM - P SERIES )



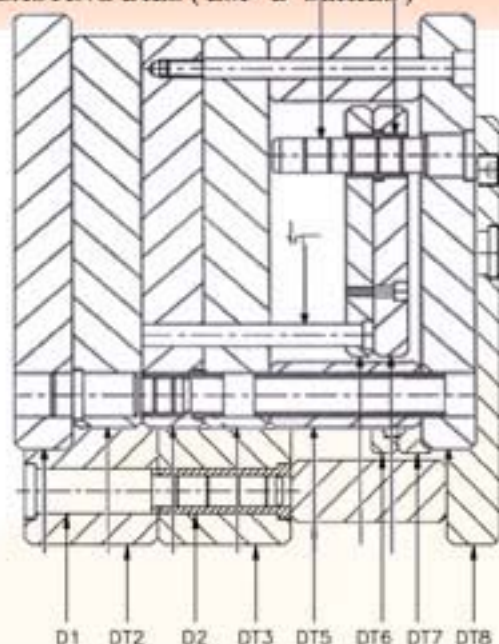
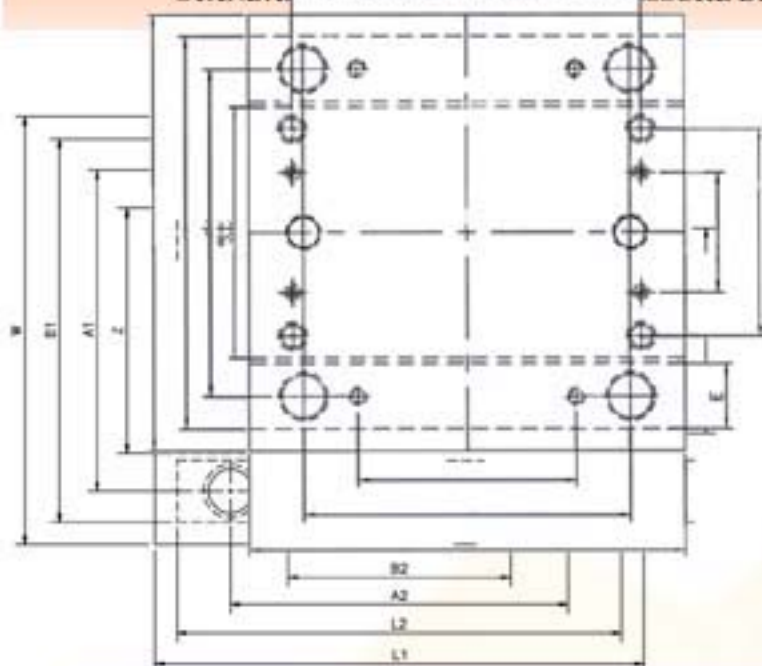
LTT CODE	W	L	A1	A2	A3	B1	B2	B3	C	E	R1	D1/D2	T1/T2	T2/T3	T4	T5	T6	T7	SCREWS	
																			SMBE	EPL
P 1010	156	156	120	120	72	66	130	38	96	31	10	24/14	20	26 to 56	26	46 to 66	30	12	M8	M6
P 1020	156	196	120	160	112	66	170	38	96	31	10	24/14	20	26 to 76	26	46 to 66	30	12	M8	M6
P 1025	156	246	120	210	162	66	220	38	96	31	10	24/16	20	26 to 76	26	46 to 66	30	12	M8	M6
P 1030	196	196	158	158	96	97	168	58	120	36	12	28/20	26	26 to 86	36	66 to 106	12	16	M8	M6
P 1035	196	246	158	208	148	97	218	58	120	36	12	28/20	26	26 to 86	36	66 to 106	12	16	M8	M6
P 1040	196	296	158	258	198	97	268	58	120	36	12	28/20	26	26 to 86	36	66 to 106	12	16	M12	M8
P 1045	196	346	158	308	248	97	318	58	120	36	12	28/20	26	26 to 86	36	66 to 106	12	16	M12	M8
P 1050	196	396	158	358	298	97	368	58	120	36	12	28/20	26	26 to 86	36	66 to 106	12	16	M12	M8
P 1055	246	246	200	200	136	94	216	132	150	46	14	32/24	26	26 to 106	36	66 to 106	36	26	M12	M8
P 1060	246	296	200	250	184	94	266	132	150	46	14	32/24	26	26 to 106	36	66 to 106	36	26	M12	M8
P 1065	246	346	200	300	234	94	316	132	150	46	14	32/24	26	26 to 106	36	66 to 106	36	26	M12	M8
P 1070	246	396	200	350	284	94	366	132	150	46	14	32/24	26	26 to 106	36	66 to 106	36	26	M12	M8
P 1075	246	446	200	400	334	94	416	132	150	46	14	32/24	26	26 to 106	36	66 to 106	36	26	M12	M8
P 1080	296	296	250	250	184	144	268	182	200	46	14	32/24	26	26 to 146	46	66 to 106	36	26	M12	M8
P 1085	296	346	250	300	234	144	318	182	200	46	14	32/24	26	26 to 146	46	66 to 106	36	26	M12	M8
P 1090	296	396	250	350	284	144	368	182	200	46	14	32/24	26	26 to 146	46	66 to 106	36	26	M12	M8
P 1095	296	446	250	400	334	144	418	182	200	46	14	32/24	26	26 to 146	46	66 to 106	36	26	M12	M8
P 1100	296	496	250	450	384	144	468	182	200	46	14	32/24	26	26 to 146	46	66 to 106	36	26	M12	M8
P 1105	296	546	250	500	434	144	518	182	200	46	14	32/24	26	26 to 146	46	66 to 106	36	26	M12	M8
P 1110	346	346	300	300	234	186	318	230	250	46	14	32/24	26	26 to 146	46	66 to 106	36	26	M12	M8
P 1115	346	396	300	350	284	186	368	230	250	46	14	32/24	26	26 to 146	46	66 to 106	36	26	M12	M8
P 1120	346	446	300	400	334	186	418	230	250	46	14	32/24	26	26 to 146	46	66 to 106	36	26	M16	M10
P 1125	346	496	300	450	384	186	468	230	250	46	14	32/24	26	26 to 146	46	66 to 106	36	26	M16	M10
P 1130	346	546	300	500	434	186	518	230	250	46	14	32/24	26	26 to 146	46	66 to 106	36	26	M16	M10
P 1135	396	396	300	340	232	206	360	236	278	56	18	42/34	36	36 to 186	56	66 to 126	36	26	M16	M10
P 1140	396	446	340	380	282	206	410	236	278	56	18	42/34	36	36 to 186	56	66 to 126	36	26	M16	M10
P 1145	396	496	340	430	332	206	460	236	278	56	18	42/34	36	36 to 186	56	66 to 126	36	26	M16	M10
P 1150	396	546	340	480	382	206	510	236	278	56	18	42/34	36	36 to 186	56	66 to 126	36	26	M16	M10
P 1155	446	446	390	390	282	256	410	306	328	56	18	42/34	36	36 to 186	56	66 to 126	36	26	M16	M10
P 1160	446	496	390	440	332	256	460	306	328	56	18	42/34	36	36 to 186	56	66 to 126	36	26	M16	M10
P 1165	446	546	390	490	382	256	510	306	328	56	18	42/34	36	36 to 186	56	66 to 126	36	26	M16	M10
P 1170	446	596	390	540	432	256	560	306	328	56	18	42/34	36	36 to 186	56	66 to 126	36	26	M16	M10
P 1175	496	496	440	440	332	306	460	336	328	56	18	42/34	36	36 to 186	56	66 to 146	36	26	M16	M10
P 1180	496	546	440	490	382	306	510	336	328	56	18	42/34	36	36 to 186	56	66 to 146	36	26	M16	M10
P 1185	496	596	440	540	432	306	560	336	328	56	18	42/34	36	36 to 186	56	66 to 146	36	26	M16	M10
P 1190	496	646	440	590	482	306	610	336	328	56	18	42/34	36	36 to 186	56	66 to 146	36	26	M16	M10
P 1195	546	546	490	490	382	356	510	406	428	56	18	42/34	36	36 to 186	56	66 to 146	36	26	M16	M10
P 1200	546	596	490	540	432	356	560	406	428	56	18	42/34	36	36 to 186	56	66 to 146	36	26	M16	M10
P 1205	546	646	490	590	482	356	610	406	428	56	18	42/34	36	36 to 186	56	66 to 146	36	26	M16	M10
P 1210	596	596	532	532	424	356	560	440	462	64	18	50/42	36	36 to 186	56	66 to 146	36	26	M16	M10
P 1215	596	646	532	632	524	390	660	440	462	64	18	50/42	36	36 to 186	56	66 to 146	36	26	M16	M10
P 1220	596	696	532	732	624	390	760	440	462	64	18	50/42	36	36 to 186	56	66 to 146	36	26	M16	M10
P 1225	596	746	532	832	724	390	860	440	462	64	18	50/42	36	36 to 186	56	66 to 146	36	26	M16	M10

- W =
- L =
- A1 =
- A2 =
- A3 =
- B1 =
- B2 =
- B3 =
- C =
- E =
- Rd =
- PT1 =
- PT2 =
- PT3 =
- PT4 =
- PT5 =
- PT6 =
- PT7 =
- PT8 =
- OD1 =
- OD2 =
- SMBE =
- EPL =
- P =

To Select Guide Pillar , Guide Bushes & other Mould Spares  
Please Refer Page No : 13



## STANDARD Mould PLATES FOR PRESSURE DIE CASTING DIES ( LM - D SERIES )



LMDC CODE	W	L1	A1	A2	B1	B2	C1	C2	G1	G2	Z	L2	R	D1/D2	D1A/D2	DT1A/DT2	DT3	DT4	DT5	DT6	DT7	DT8	SCREWS	
																							SMB	EPL
D 2825	246	346	186	186	170	84	80	136	188	168	120	186	46	28/28	32/24	46 to 186	86 to 120	86	36	26	M12	MB		
D 2830	246	346	186	236	170	144	80	136	188	218	128	246	46	28/28	32/24	46 to 186	86 to 120	86	36	26	M12	MB		
D 2835	246	346	186	286	170	194	80	214	186	268	120	236	46	28/28	32/24	46 to 186	86 to 120	86	36	26	M12	MB		
D 2840	246	396	186	336	170	244	80	264	186	318	120	346	46	28/28	32/24	46 to 186	86 to 120	86	36	26	M12	MB		
D 3030	296	396	236	236	210	144	100	186	238	218	193	246	56	28/28	42/34	86 to 146	86 to 120	86	36	36	M16	M18		
D 3040	296	396	236	316	210	214	100	266	238	318	193	346	56	28/28	42/34	86 to 146	86 to 120	86	36	36	M16	M18		
D 3050	296	496	236	416	210	314	100	366	238	418	193	446	56	28/28	42/34	86 to 146	86 to 120	86	36	36	M16	M18		
D 3135	346	346	266	266	250	160	130	266	196	268	180	296	66	24/32	42/34	86 to 186	86 to 166	86	36	36	M16	M10		
D 3140	346	396	266	316	250	210	130	256	196	318	180	346	66	24/32	42/34	86 to 186	86 to 166	86	36	36	M16	M10		
D 3150	346	496	266	416	250	310	130	356	196	418	180	446	66	24/32	42/34	86 to 186	86 to 166	86	36	36	M16	M10		
D 4040	346	396	296	296	296	186	180	251	286	310	230	346	66	24/32	50/42	76 to 186	86 to 166	26	36	36	M16	M10		
D 4050	396	496	296	396	296	286	180	351	286	410	230	446	66	24/32	50/42	76 to 186	86 to 166	26	36	36	M16	M10		
D 4060	396	596	296	496	296	386	180	451	286	510	230	546	66	24/32	50/42	76 to 186	86 to 166	26	36	36	M16	M10		
D 4545	446	446	346	346	346	236	230	296	236	360	260	396	76	24/32	50/42	76 to 186	86 to 186	26	36	36	M16	M10		
D 4550	446	496	346	396	346	286	230	346	236	410	260	446	76	24/32	50/42	76 to 186	86 to 186	26	36	36	M16	M10		
D 4560	446	596	346	496	346	386	230	446	236	510	260	546	76	24/32	50/42	76 to 186	86 to 186	26	36	36	M16	M10		
D 5050	496	496	376	376	396	256	250	336	286	410	310	446	76	34/42	60/58	86 to 206	86 to 186	26	36	46	M20	M12		
D 5060	496	596	376	476	396	356	250	436	286	510	310	546	76	34/42	60/58	86 to 206	86 to 186	26	36	46	M20	M12		
D 5070	496	696	376	576	396	456	250	536	286	610	310	646	76	34/42	60/58	86 to 206	86 to 186	26	36	46	M20	M12		
D 5080	496	796	376	676	396	556	250	636	286	710	310	746	76	34/42	60/58	86 to 206	86 to 186	26	36	46	M20	M12		
D 5555	546	546	426	426	446	306	280	386	316	460	340	496	86	34/42	60/58	86 to 206	86 to 186	26	36	46	M20	M12		
D 5560	546	596	426	476	446	356	280	460	316	530	340	546	86	34/42	60/58	86 to 206	86 to 186	26	36	46	M20	M12		
D 5570	546	696	426	576	446	456	280	560	316	610	340	646	86	34/42	60/58	86 to 206	86 to 186	26	36	46	M20	M12		
D 5580	546	796	426	676	446	556	280	660	316	710	340	746	86	34/42	60/58	86 to 206	86 to 186	26	36	46	M20	M12		
D 6060	596	596	476	476	496	356	330	436	346	510	370	546	86	34/42	60/58	86 to 206	106 to 186	26	46	46	M20	M12		
D 6070	596	696	476	576	496	456	330	536	346	610	370	646	86	34/42	60/58	86 to 206	106 to 186	26	46	46	M20	M12		
D 6080	596	796	476	676	496	556	330	636	346	710	370	746	86	34/42	60/58	86 to 206	106 to 186	26	46	46	M20	M12		
D 6090	596	896	476	776	496	656	330	736	346	810	370	846	86	34/42	60/58	86 to 206	106 to 186	26	46	46	M20	M12		

W =  
L =  
X1 =  
X2 =  
Y1 =  
Y2 =  
X3 =  
Y3 =  
Z =  
R =

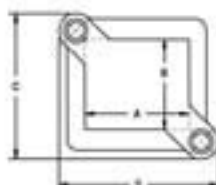
RD =  
LM1 =  
LM2 =  
LM3 =  
LM4 =  
LM5 =  
LM6 =  
LM7 =  
LM8 =  
D1 =

D2 =  
SMB =  
EPL =  
P =  
Q =  
S =

To Select Guide Pillar , Guide Bushes & other Mould Spares  
Please Refer Page No : 13



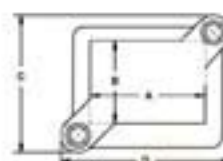
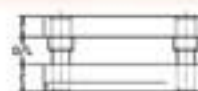
### CAST IRON DIAGONAL PILLAR SQUARE



Standard Daylight (D/L) - 100 mm

Cat. No	A	B	C	D	E	F
LMCDS - 33	75	75	165	165	30	25
LMCDS - 44	100	100	190	190	35	30
LMCDS - 55	125	125	240	240	35	30
LMCDS - 66	150	265	265	265	40	35
LMCDS - 77	175	175	290	290	40	35
LMCDS - 88	200	200	330	330	40	35
LMCDS - 99	225	225	360	360	45	40
LMCDS - 10	250	250	400	400	45	40
LMCDS - 12	300	300	310	450	50	45
LMCDS - 14	350	350	360	500	55	50
LMCDS - 16	400	400	410	560	55	50
LMCDS - 18	450	450	460	610	55	50

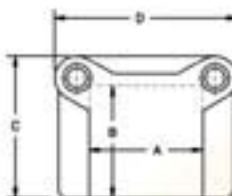
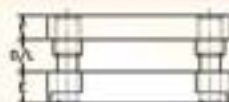
### CAST IRON DIAGONAL PILLAR RECTANGULAR



Standard Daylight (D/L) - 100 mm

Cat. No	A	B	C	D	E	F
LMCDR - 43	100	75	160	195	30	25
LMCDR - 54	125	100	195	225	35	30
LMCDR - 65	150	125	225	265	35	30
LMCDR - 75	175	125	230	290	35	30
LMCDR - 76	175	150	260	290	40	35
LMCDR - 84	200	100	205	315	40	35
LMCDR - 97	225	175	300	360	45	40
LMCDR - 106	250	150	290	390	45	40
LMCDR - 108	250	200	330	390	45	40
LMCDR - 126	300	150	260	455	50	45
LMCDR - 129	300	225	365	455	50	45
LMCDR - 148	350	200	330	500	55	50
LMCDR - 1410	350	250	400	510	55	50
LMCDR - 1610	400	250	400	560	55	50
LMCDR - 1612	400	300	450	560	55	50
LMCDR - 1814	450	350	520	640	55	50
LMCDR - 2015	500	375	545	690	55	50

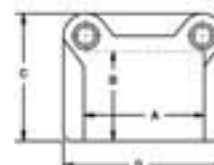
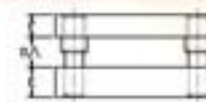
### CAST IRON REAR PILLAR SQUARE



Standard Daylight (D/L) - 100 mm

Cat. No	A	B	C	D	E	F
LMCRS - 33	75	75	115	130	30	25
LMCRS - 44	100	150	190	190	30	25
LMCRS - 55	125	125	185	220	35	30
LMCRS - 66	150	150	210	255	35	30
LMCRS - 77	175	175	235	270	40	35
LMCRS - 88	200	200	270	325	40	35
LMCRS - 99	225	225	290	350	45	40
LMCRS - 10	250	250	330	395	50	45
LMCRS - 11	275	275	355	425	50	45
LMCRS - 12	300	300	380	445	50	45
LMCRS - 14	350	350	430	500	50	45

### CAST IRON REAR PILLAR RECTANGULAR

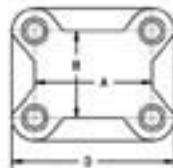


Standard Daylight (D/L) - 100 mm

Cat. No	A	B	C	D	E	F
LMCRR - 43	100	75	130	150	28	28
LMCRR - 54	125	100	160	180	30	28
LMCRR - 65	150	125	190	210	35	30
LMCRR - 75	175	125	190	240	35	30
LMCRR - 94	225	100	165	300	35	30
LMCRR - 86	200	150	220	275	40	35
LMCRR - 97	225	175	250	305	40	35
LMCRR - 105	250	125	200	330	45	40
LMCRR - 108	250	200	275	330	45	40
LMCRR - 128	300	200	280	385	45	40
LMCRR - 129	300	225	310	385	45	40
LMCRR - 1410	350	250	335	435	45	40
LMCRR - 1610	400	250	335	490	50	45
LMCRR - 1612	400	300	385	490	50	45
LMCRR - 1412	350	300	385	435	50	45
LMCRR - 1814	450	350	450	550	55	50
LMCRR - 208	500	200	275	600	55	50
LMCRR - 2010	500	250	330	600	55	50



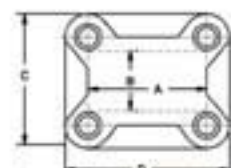
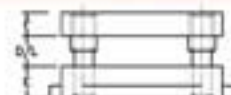
**CAST IRON  
SQUARE FOUR PILLAR**



Standard Daylight (D/L) - 100 mm

Cat. No	A	B	C	D	E	F
LMCSF - 55	125	125	230	230	35	35
LMCSF - 66	150	150	260	260	40	35
LMCSF - 77	175	175	280	280	40	35
LMCSF - 88	200	200	310	310	45	40
LMCSF - 99	225	225	350	350	45	40
LMCSF - 10	250	250	380	380	45	40
LMCSF - 11	275	275	420	420	50	45
LMCSF - 12	300	300	450	450	50	45
LMCSF - 13	325	325	475	475	50	45
LMCSF - 14	350	350	510	510	50	45
LMCSF - 16	400	400	580	580	55	50
LMCSF - 18	450	450	620	620	55	50

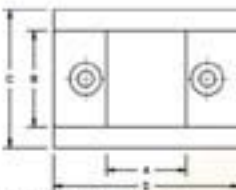
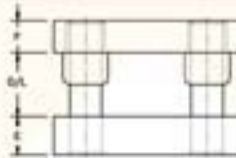
**CAST IRON  
RECTANGULAR FOUR PILLAR**



Standard Daylight (D/L) - 100 mm

Cat. No	A	B	C	D	E	F
LMCRF - 64	150	100	200	260	35	35
LMCRF - 86	200	150	270	310	40	35
LMCRF - 97	225	175	280	350	40	35
LMCRF - 108	250	200	310	360	40	35
LMCRF - 126	300	150	270	440	40	35
LMCRF - 129	300	225	350	440	45	40
LMCRF - 1210	300	250	380	440	45	40
LMCRF - 148	350	200	310	500	45	40
LMCRF - 1410	350	250	380	500	45	40
LMCRF - 168	400	200	310	560	50	45
LMCRF - 1612	400	300	440	560	50	45
LMCRF - 189	450	225	350	600	50	45
LMCRF - 1814	450	350	510	600	50	45
LMCRF - 2010	500	250	380	600	55	50
LMCRF - 2012	500	300	450	680	55	50
LMCRF - 2412	600	300	450	750	55	50
LMCRF - 2418	600	450	620	750	55	50

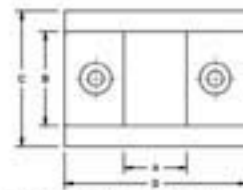
**MILD STEEL  
CENTER PILLAR SQUARE**



Standard Daylight (D/L) - 100 mm

Cat. No	A	B	C	D	E	F
LMMCS - 44	100	100	140	220	35	30
LMMCS - 55	125	125	170	250	35	30
LMMCS - 66	150	150	200	280	40	35
LMMCS - 77	175	175	225	310	40	35
LMMCS - 88	200	200	250	350	45	40
LMMCS - 99	225	225	275	380	45	40
LMMCS - 99	250	250	300	400	45	40
LMMCS - 10	300	300	350	440	45	40
LMMCS - 12	350	350	400	500	50	45
LMMCS - 14	400	400	450	550	50	45

**MILD STEEL  
CENTER PILLAR RECTANGULAR**

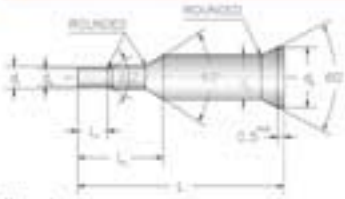


Standard Daylight (D/L) - 100 mm

Cat. No	A	B	C	D	E	F
LMMCR - 54	125	100	140	250	35	30
LMMCR - 65	150	125	170	280	35	30
LMMCR - 75	175	125	170	310	35	30
LMMCR - 86	200	150	200	350	40	35
LMMCR - 97	225	175	225	380	40	35
LMMCR - 108	250	200	250	400	40	35
LMMCR - 126	300	150	200	440	40	35
LMMCR - 128	300	200	250	440	45	40
LMMCR - 129	300	225	275	440	45	40
LMMCR - 1410	350	250	300	500	45	40
LMMCR - 1412	350	300	350	500	45	40
LMMCR - 168	400	200	250	550	45	40
LMMCR - 1612	400	300	350	550	50	45
LMMCR - 189	450	225	275	600	50	45
LMMCR - 208	500	200	250	650	50	45
LMMCR - 2010	500	250	300	650	50	45



**PUNCHES FOR SHEET METAL ANCHORAGE WITH METRIC THREAD**



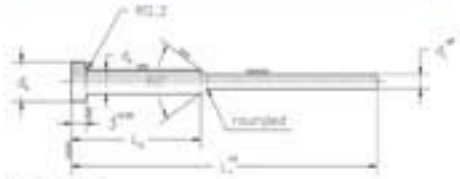
Dimension in mm

For Thread	d <sub>1</sub> <sup>h6</sup>	d <sub>2</sub>	d <sub>1</sub> <sup>+h7</sup>	d <sub>2</sub> <sup>+h8</sup>	L <sub>1</sub>	L <sub>2</sub>	L <sub>3</sub>
M2			1.65	1.0	60	0.5	
M2.2			1.8	1.05	60	0.5	
M2.5	4	4.5	2.5	1.1	60	0.5	
M3			2.55	1.3			2
M3.3	4	5.5	2.95	1.3			10
M4			3.35	2.0			2.5
M5	5	6.5	3.25	2.5			
M6	6	8	3.5	2.5			2
M8	8	10	4.85	3.2			4

- Material: HSS n/52
- Finish: Hardened, tempered plange ground and Lapped
- \*Length: 60 & 70 mm.
- Hardness: Shank: 62<sup>±</sup> 2° Rockwell C  
Head: 45<sup>±</sup> 5° Rockwell C

Eg. of ordering: ANCHORAGE PUNCH HSS 10 X 70

**PUNCHES FOR WIDE ANGLE SHEET METAL ANCHORAGE**



Dimension in mm

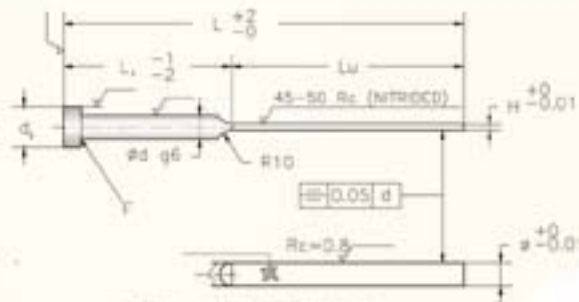
d <sub>1</sub>	g6	d <sub>2</sub>	d <sub>1</sub>	d <sub>2</sub>
1.8				
2.5	-0.002			
3	-0.008	4	7	
3.8		8	1	

d <sub>2</sub>	100	125	160	200
L	30	30	35	35

\* see preferred size

- Material: HSS n/52
- Finish: Hardened, tempered plange ground and Lapped
- \*Length: L<sub>1</sub> Corresponds to required L<sub>1</sub> for any diameter.
- Hardness: HSS: Surface after nitriding 65° Rc, Core: 40° - 50° Rc.  
Silver Stud: 50° - 60° Rc (No Nitriding) can withstand working temperature upto 200° C

**BLADE EJECTORS**



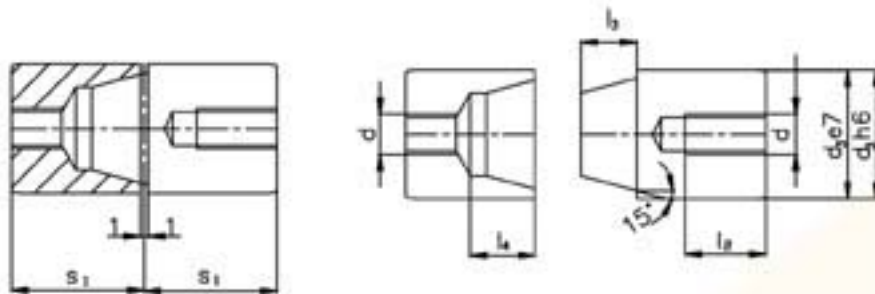
MATERIAL: HOT DIE STEEL H11

g <sub>6</sub>	d <sub>2</sub>	k	r	G	H	L <sub>1</sub>	L <sub>2</sub>	32	40	50	63	80	100	125	160	200	
							L <sub>2</sub>	31	40	50	63	80	100	125	160	200	
4	8	3	0.3	3.5	0.8	0.8	✓	✓	✓	✓	✓	✓	✓				
						1	✓	✓	✓	✓	✓	✓	✓				
						1.2	✓	✓	✓	✓	✓	✓	✓				
						0.8	✓	✓	✓	✓	✓	✓	✓				
						1	✓	✓	✓	✓	✓	✓	✓				
						1.2	✓	✓	✓	✓	✓	✓	✓				
5	10	3	0.3	4.5	1	1	✓	✓	✓	✓	✓	✓	✓				
						1.2	✓	✓	✓	✓	✓	✓	✓				
						1.5	✓	✓	✓	✓	✓	✓	✓				
						1.6	✓	✓	✓	✓	✓	✓	✓				
						1.8	✓	✓	✓	✓	✓	✓	✓				
						2	✓	✓	✓	✓	✓	✓	✓				
6	12	3	0.5	5.5	1.2	1.2	✓	✓	✓	✓	✓	✓	✓				
						1.5	✓	✓	✓	✓	✓	✓	✓				
						1.6	✓	✓	✓	✓	✓	✓	✓				
						1.8	✓	✓	✓	✓	✓	✓	✓				
						2	✓	✓	✓	✓	✓	✓	✓				
						2.5	✓	✓	✓	✓	✓	✓	✓				
8	14	3	0.5	7.5	1.2	1.2	✓	✓	✓	✓	✓	✓	✓				
						1.5	✓	✓	✓	✓	✓	✓	✓				
						1.6	✓	✓	✓	✓	✓	✓	✓				
						1.8	✓	✓	✓	✓	✓	✓	✓				
						2	✓	✓	✓	✓	✓	✓	✓				
						2.5	✓	✓	✓	✓	✓	✓	✓				
10	16	3	0.5	9.5	1.5	1.5	✓	✓	✓	✓	✓	✓	✓				
						1.8	✓	✓	✓	✓	✓	✓	✓				
						2	✓	✓	✓	✓	✓	✓	✓				
						2.5	✓	✓	✓	✓	✓	✓	✓				
						2	✓	✓	✓	✓	✓	✓	✓				
						2.5	✓	✓	✓	✓	✓	✓	✓				
12.5	18	3	0.8	12	2	2	✓	✓	✓	✓	✓	✓	✓				
						2.5	✓	✓	✓	✓	✓	✓	✓				
						2	✓	✓	✓	✓	✓	✓	✓				
						2.5	✓	✓	✓	✓	✓	✓	✓				
						2	✓	✓	✓	✓	✓	✓	✓				
						2.5	✓	✓	✓	✓	✓	✓	✓				
16	22	3	0.8	15	2	2	✓	✓	✓	✓	✓	✓	✓				
						2.5	✓	✓	✓	✓	✓	✓	✓				
						2	✓	✓	✓	✓	✓	✓	✓				
						2.5	✓	✓	✓	✓	✓	✓	✓				
						2	✓	✓	✓	✓	✓	✓	✓				
						2.5	✓	✓	✓	✓	✓	✓	✓				

All other specifications as per DIN 1530 'A' type

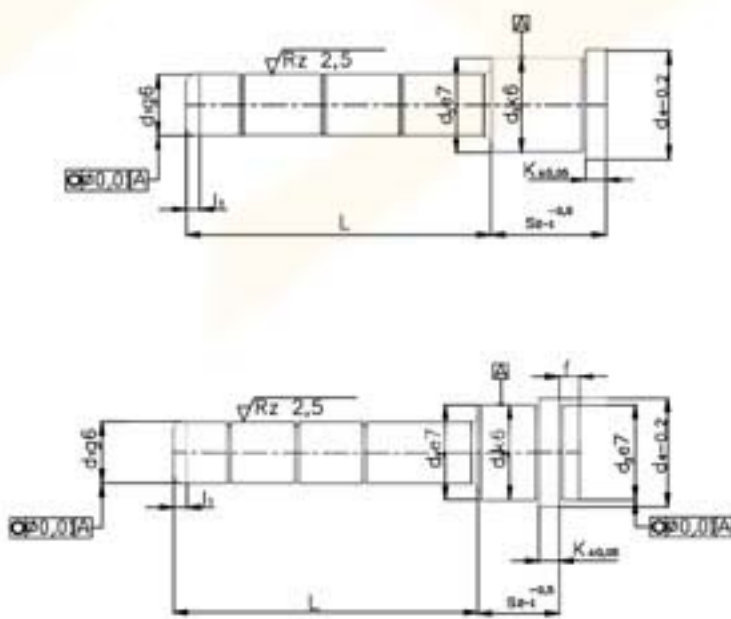


# TAPER LOCK



$l_a$	$l_b$	$l_c$	$d$	$s_1$	$d_e$	Nr./No
8	5	10	M 4	17	12	LTL/12
	7	11	M 5		14	14
					16	16
13	10	15	M 8	27	20	20
	11				25	25
	10				26	26
20	14	18	M 10	36	30	30
					32	32
25	18			46	42	42

# GUIDE PILLAR



# GUIDE BUSH

